

## Middlesex Schools Rugby Policy

### 1. Objective of this policy

To provide clarity to the relationship between England Rugby Football Schools Union (ERFSU) (also known as 'England Rugby Schools'), the Middlesex Schools Union (MSU) and Middlesex County RFU. MSU also referred to as the County Schools Union.

### 2. Scope

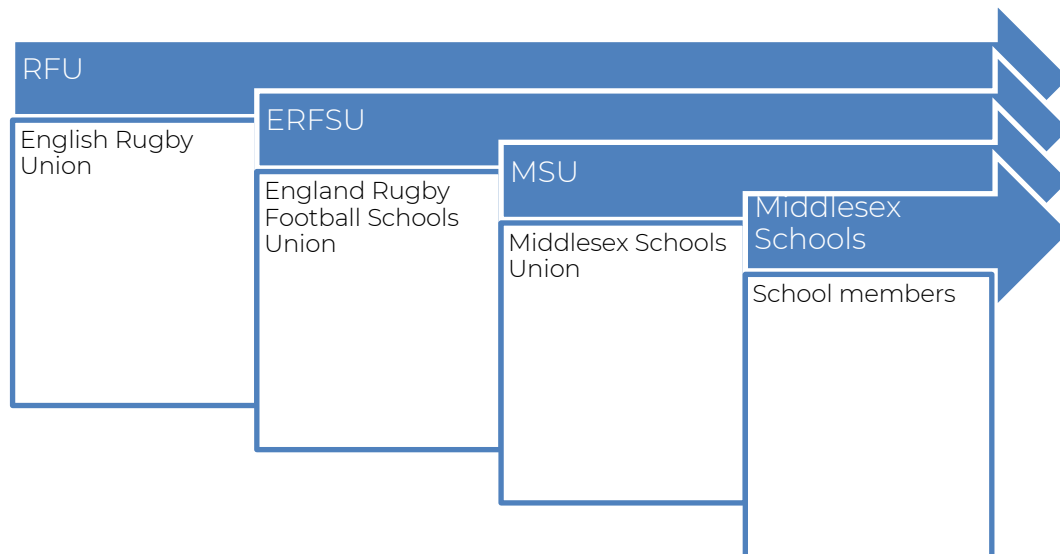
Describes the framework that supports Middlesex school rugby, which is underpinned by the ERFSU, MSU, Middlesex County RFU and numerous volunteers.

### 3. Audience

All members of Middlesex's school community, which includes all Middlesex Affiliated Schools.

### 4. Background

The hierarchy that supports Middlesex schools' rugby is illustrated as follows:



**England Rugby Football Schools Union (ERFSU)** was founded in 1950 and became a charity in 2002. It is the school's arm of the Rugby Football Union's (RFU) and works with the Rugby Football Union Education Department.

#### Overview:

- Its role is to administer, foster, encourage, extend, and control rugby union football for the moral, mental and physical development of schoolboys and girls attending school within England
- It is a non-geographical Constituent Body (CB).

#### Governance:

- ERFU has two representatives on the RFU council as well as membership on some other RFU committees
- It is supported by an ERFU Committee (all elected members)
- It is run by a vast number of volunteers, made up of mostly schoolteachers.

**Middlesex Schools Union (MSU)** is a Constituent Schools Union and it is a member of the ERFU.

#### Overview:

- It is dedicated to raising the profile of rugby within Middlesex, by seeking to encourage all schools to get involved through its various competitions, and promoting the excellence of performance teams
- It is committed to supporting emerging schools, through the Plate Competition which is deliberately designed to encourage emerging rugby playing schools
- The competitions can be broken down into three main categories:
  - Middlesex Schools Competition
    - The U14, U15, U16 and U18 boys compete through the schools' season in either the cup or the plate competition
    - U15 and U18 girls compete through the schools' season in the cup
    - These competitions give the school teams the opportunity to compete against each other through in early rounds and then in the finals which are played over three days
    - 160 teams compete in over 350 matches to reach the final stages across the county culminating in the Middlesex Schools Finals
    - Complies with Age Grade Rugby Regulations.
  - One day festivals
    - A one-day U12 boys festival and a one-day U13 boys/girls festival, which takes place in November and December respectively.

#### Governance:

The MSU is run by a vast number of volunteers, made up of mostly schoolteachers but supported by the MSU Committee, which is made up as follows:

- An Honorary President, traditionally the Middlesex County President
- Chair, Mr. D Jones (Assistant Head Teacher RTS)
- Secretary, Mr. C Devlin (PE Teacher London Oratory School)
- Treasurer, Mr. J Chasney (PE Teacher Gunnersbury Catholic School)
- ESRFU. Mr. K Moran (London Oratory School).

KEEP UPDATED  
**FOLLOW US ON :**

The committee is elected by The Middlesex School Union and the Treasurer sits on the Middlesex Rugby RFU Finance Committee.

The Chair reports both to the ERFSU and to the Middlesex Management Board via the Chair of Rugby Development.

### **Middlesex Schools**

School members include all Middlesex Affiliated Schools, who pay an annual subscription to the MSU in June of each year.

Membership is open to Middlesex primary and secondary schools in the state and Independent sectors.

### **5. Middlesex County RFU**

Middlesex County RFU is represented by the Middlesex Management Board (MCRFU) whose role is to grow and develop rugby union and promote the core values of the game within the old County of Middlesex.

Middlesex County RFU has had a strong partnership with Middlesex Schools through its financial and management support of the various school competitions. It also ensures that all risk assessments are in place and compliant with Regulations 9, Player safety, Regulation 15 Age grade rugby and Regulation 21 Safeguarding.

### **6. Owner of this Policy**

This policy is owned by the Chair of Rugby Development and approved by the Middlesex Management Board.

This policy will be reviewed and updated annually.

### **7. Approval History**

Date	Version	Document Approver	Comment
30 June 2020	Version 1	Middlesex Management Board	To be reviewed in August to September 2021